

## **P R E C A U T I O N S**

---

Not suitable for children under 12.

**DO NOT** use if you have: open cuts on or around the cuticle,  
or fungal nail infections.

Highly Flammable. Keep away from sources of ignition.

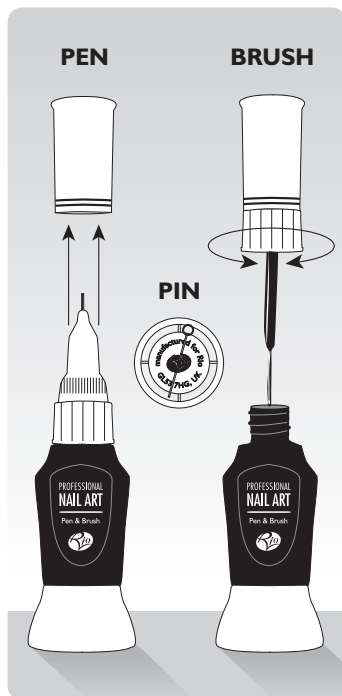
Not to be taken internally.

**Do NOT** breathe vapours, use in a well ventilated area.  
Avoid contact with eyes.



## RIO PROFESSIONAL NAIL ART

The Rio Nail Art offers unlimited scope for stunning, innovative, customised nail designs. This kit includes 8 colours (supplied in our unique professional double ended applicators), a full bodied brush, a pot of fine gold glitter and a pack of rhinestone jewels.



The double ended applicator features detailing pen and fine line brush. Also on the base of each bottle is a pin for unblocking any polish in the shaft of the detailing pen.

### REVEALING THE PEN

Simply pull the top off. No turning is required.

### REVEALING THE BRUSH

Holding the base in one hand, and the top in the other, unscrew the top anticlockwise and reveal the brush.

### USING THE PIN

The pin is located on the underside of the bottle. Removing the sticker will release it. Use it to prod down the nib of the pen should it become blocked or dry up. Re-attach to bottle after use.

## BEFORE YOU START ADVICE

---

- Make sure the surface you are working on is well protected. A few sheets of newspaper or magazine will do the trick.
- Ensure nails are clean and dry before starting application.
- Allow the polish to dry before applying another colour. You can speed up drying time by using Rio Fast Drying Spray.
- Have some nail varnish remover close at hand to clean the brush before applying another colour and for clearing up mistakes.
- Some practise will be required for applying polish to the nails on your writing hand. You may want to get a friend to help.
- Some dark nail polish colours can stain the nail. To avoid this, apply a basecoat of clear polish before painting with your chosen colour.

## APPLYING A BASE COLOUR

---

You can use any of the nail art colours as your base colour or, alternatively, use any ordinary nail polish as a base colour.

1. Do not overload the brush with polish and remember, best results are obtained when thin layers of polish are applied.



2. Starting in the centre and approximately 1mm from the cuticle, brush towards the tip.



3. Then proceed with the sides. Once the nail is complete, recap the bottle and allow your nails to dry before proceeding.

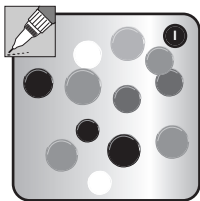


## BASIC TECHNIQUES

---

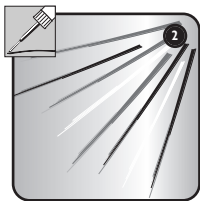
### 1. DOTS

Dots are produced by using the detailing pens. Place the pen on the nail with light pressure and lift straight up. Larger dots can be created by building up with a circular motion. To bring the polish to the tip of the pen, squeeze the bottle gently.



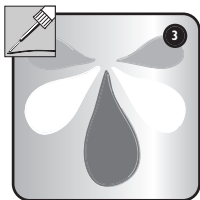
### 2. STROKES

To create tapered strokes, put the brush down on the nail and using a quick 'flicking' action, brush across the nail. For a standard stroke, move the brush across the nail slowly, applying gentle pressure.



### 3. TEARDROPS

With the brush touching the nail, apply slight pressure so the brush hairs spread to the required size. Move the brush across the nail, releasing pressure as you go, and allow the stroke to finish at a point.



'Comma' shapes can be created in a similar fashion, only sweep the brush down and to one side in a circular motion, releasing pressure as you go.

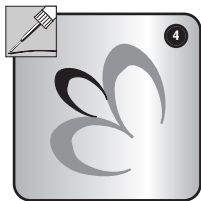
## BASIC TECHNIQUES

---

### 4. CURLED STROKES

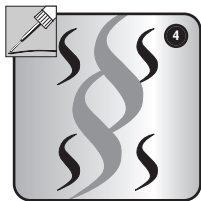
#### 'C' Strokes

Move the brush anti-clockwise in a circular direction as though writing the letter 'C'. Apply pressure as you reach the left point at which you change direction sweeping the brush round to the right releasing pressure as you go.



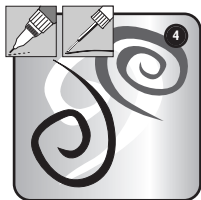
#### 'S' Strokes

Put the brush on the nail and sweep the brush down the nail moving slightly to the left, then applying more pressure move to the right and then releasing pressure, back to the left.



#### Swirls

Using the pen or the brush in an upright position, apply light pressure and with a circular motion move it outwards and clockwise. Applying slightly more pressure with the brush will change the look, though too much will cause the swirl to fill in.



Moving your brush and pen in opposite directions to those described above, will create the reversed image.

## APPLYING GLITTER

---

Glitter is applied to wet polish. It can be either applied onto the whole area of the nail, or selected areas.

1. Choose a background colour for the glitter (this can be the same as your base colour) and paint the area you wish the glitter to cover.



2. While the polish is still wet, sprinkle glitter onto the nail. Have a piece of paper under the nail to catch any excess glitter. This can then be returned to the jar using a clean, dry brush.

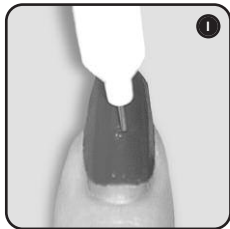


3. A top coat of clear varnish can be applied to protect the glitter.

## APPLYING RHINESTONE JEWELS

---

1. Use the pen to dab some paint onto the nail.



2. Apply the jewel with gentle pressure to the wet paint. You may find it easier to use a dampened cotton bud or cocktail stick to pick up and position the jewel. Allow the paint to dry before continuing.



3. For extra security, apply a coat of clear nail varnish over the jewel.



## DESIGNS TO TRY

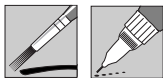
---

The following designs use the four basic techniques already covered. Follow the steps to each design, from start to finish, and create your nail masterpiece.



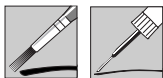
### PAW PRINT

Dots



### ZEBRA

Strokes, Glitter, Jewels



### FLOWER

Teardrops, Dots



### SILVER WITH BLACK SWIRLS

Curled Strokes, Dots

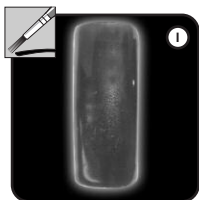


## DESIGNS TO TRY

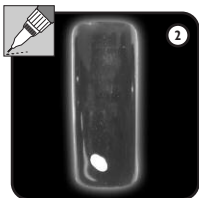
---

### PAW PRINT

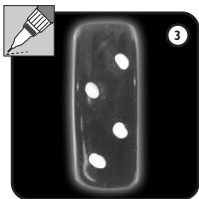
1. Starting 1mm from the cuticle, and from the centre, apply the base colour towards the tip. Then proceed with the sides and recap the bottle.



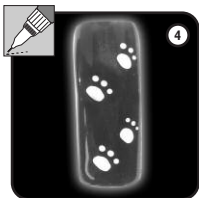
2. Allow the base coat to dry completely. Using the white nail pen, place it on the nail, squeeze gently and use circular movement to form large spot.



3. Proceed up the nail, as in the diagram, with three further dots



4. Still using the white pen, place 3 tiny dots above the larger ones. Apply your own topcoat (optional).



## DESIGNS TO TRY

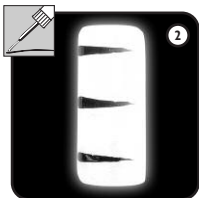
---

### ZEBRA

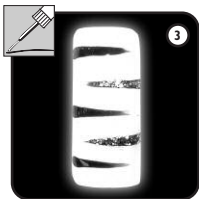
1. Starting 1mm from the cuticle, and from the centre, brush white polish towards tip. Then proceed with the sides and recap the bottle.



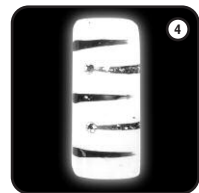
2. Using the stroke technique with the black nail brush, paint three stripes from left to right. Allow to dry.



3. Using the above technique, paint from right to left applying two more strokes. Whilst the polish is still wet, sprinkle the glitter over.



4. Using a cocktail stick, pick up a jewel and push into tacky polish.

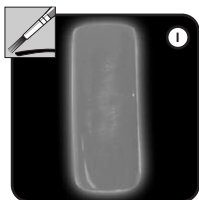


## DESIGNS TO TRY

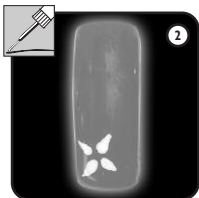
---

### FLOWER

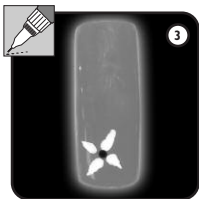
1. Starting 1mm from the cuticle, and from the centre, apply the base colour towards the tip. Then proceed with the sides and recap the bottle.



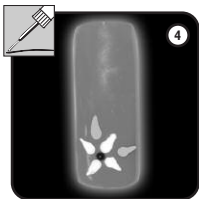
2. Using the white nail brush, paint on the nail using the 'teardrop' technique. Repeat for the 3 remaining petals.



3. Using the black pen, paint a small black dots for the centre of the flower.



4. Create the leaves using the green nail brush, again using the teardrop technique.

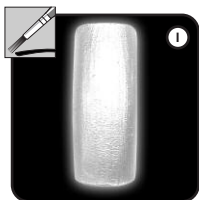


## DESIGNS TO TRY

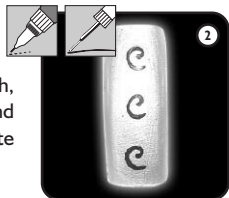
---

### SILVER WITH BLACK SWIRLS

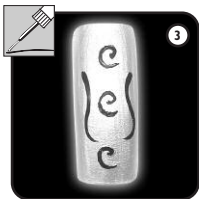
1. Starting 1mm from the cuticle, and from the centre, brush silver polish towards tip. Then proceed with the sides and recap the bottle.



2. Using the black nail pen or nail brush, place on the nail in an upright position and using the 'curled stroke' technique, create swirls.



3. With the black nail brush, paint to the left and right of the swirls using a long sweeping action.



4. Once the polish is dry, use the red nail pen to fill-in the swirls.



## AFTERCARE & GENERAL ADVICE

---

- Once your design is completely dry, a top coat of your usual clear varnish will make your design last longer.
- If you have used the large brush to apply a base colour, clean immediately with ordinary nail polish remover.
- Ensure the tops are put back on all the pens so they won't dry out.
- Keep bottles cool, dry and away from sources of ignition. Store with adequate ventilation.
- To remove your nail art, use nail polish remover.

Note: If you are wearing false nails or nail extensions, do not use a polish remover that contains acetone, as this may damage the extensions.

- This product is affected by U.V. light - store away from direct sunlight.