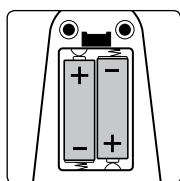


FITTING BATTERIES



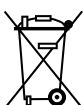
Remove the battery cover using the finger clip. Fit the x2 AA batteries in the underside of the unit, ensuring that the +/- symbols match the diagram inside the unit. Re-fit the battery cover.

NOTE: Do not use rechargeable batteries.

GENERAL CARE

- The acetone/non acetone solution can be stored in the Pot for future use. Ensure the Pot Lid is screwed on tightly.
- Dispose of acetone solution with care.
- There are no user serviceable parts inside the unit.
- The unit may be cleaned by wiping with a damp cloth. DO NOT use solvents or detergents or soak in water.
- If the unit is left unused for a long period, remove the batteries and acetone from the Pot.

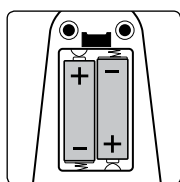
DISPOSAL



Electrical and electronic waste is the fastest growing waste stream in the UK. Around 1.8 million tonnes are generated every year. The Waste of Electrical and Electronic Equipment (WEEE) Directive (2002/96/EC) has been put in place to recycle products using best available recovery and recycling techniques to minimise the impact on the environment, treat any hazardous substances and avoid the increasing landfill.

The product is classed as Electrical or Electronic equipment so please ensure that at the end of the life of this product it is disposed of in the correct manner in accordance with local authority requirements, or, returned to The Dezac Group Ltd., Cheltenham, PO Box 54, GL14 2WW, UK. It must NOT be disposed of with household waste.

FITTING BATTERIES



Remove the battery cover using the finger clip. Fit the x2 AA batteries in the underside of the unit, ensuring that the +/- symbols match the diagram inside the unit. Re-fit the battery cover.

NOTE: Do not use rechargeable batteries.

GENERAL CARE

- The acetone/non acetone solution can be stored in the Pot for future use. Ensure the Pot Lid is screwed on tightly.
- Dispose of acetone solution with care.
- There are no user serviceable parts inside the unit.
- The unit may be cleaned by wiping with a damp cloth. DO NOT use solvents or detergents or soak in water.
- If the unit is left unused for a long period, remove the batteries and acetone from the Pot.

Ingredients

ACETONE SOLUTION: ACETONE, AQUA, RICINUS COMMUNIS OIL, ISOPROPYL PALMITATE, POLYSORBATE 80, OLEYL ALCOHOL, CETYL ACETATE, ALCOHOL DENAT., ACETYLATED LANOLIN ALCOHOL, BUTYL ACETATE, DENATONIUM BENZOATE, +/- CI 61565, CI 47000, CI 60725

Rio, Dezac and Rapid Polish Remover are trademarks of The Dezac Group Ltd © The Dezac Group Ltd 2008, PO Box 17, Cheltenham Spa, England GL53 7ET

www.riobeauty.com

1-IN-NARR-UK/1.2



Ingredients

ACETONE SOLUTION: ACETONE, AQUA, RICINUS COMMUNIS OIL, ISOPROPYL PALMITATE, POLYSORBATE 80, OLEYL ALCOHOL, CETYL ACETATE, ALCOHOL DENAT., ACETYLATED LANOLIN ALCOHOL, BUTYL ACETATE, DENATONIUM BENZOATE, +/- CI 61565, CI 47000, CI 60725

Rio, Dezac and Rapid Polish Remover are trademarks of The Dezac Group Ltd © The Dezac Group Ltd 2008, PO Box 17, Cheltenham Spa, England GL53 7ET

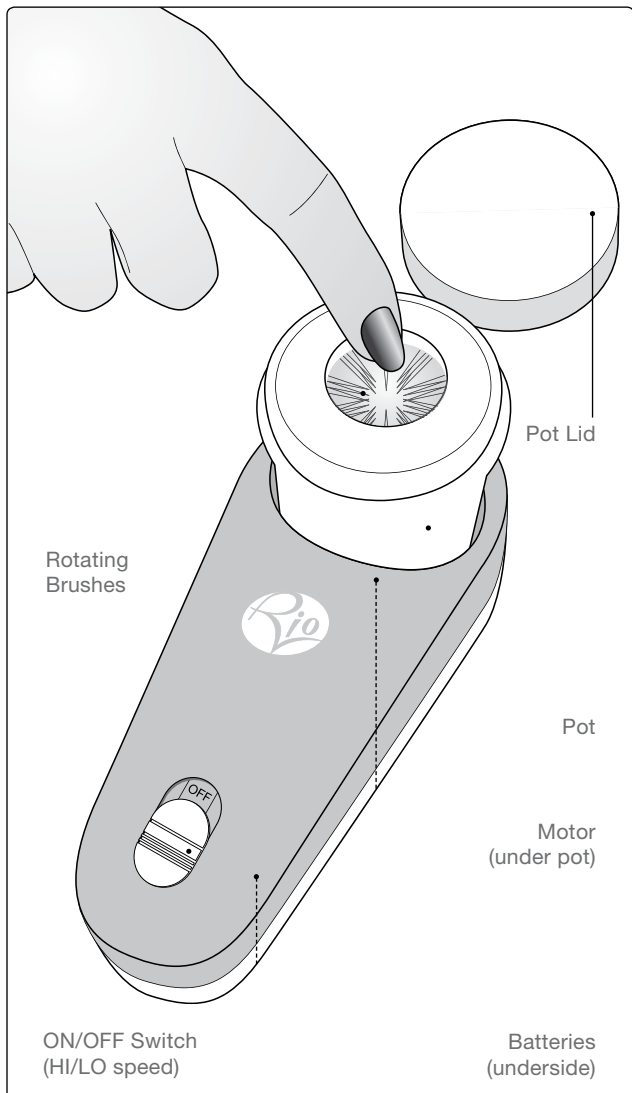
www.riobeauty.com

1-IN-NARR-UK/1.2





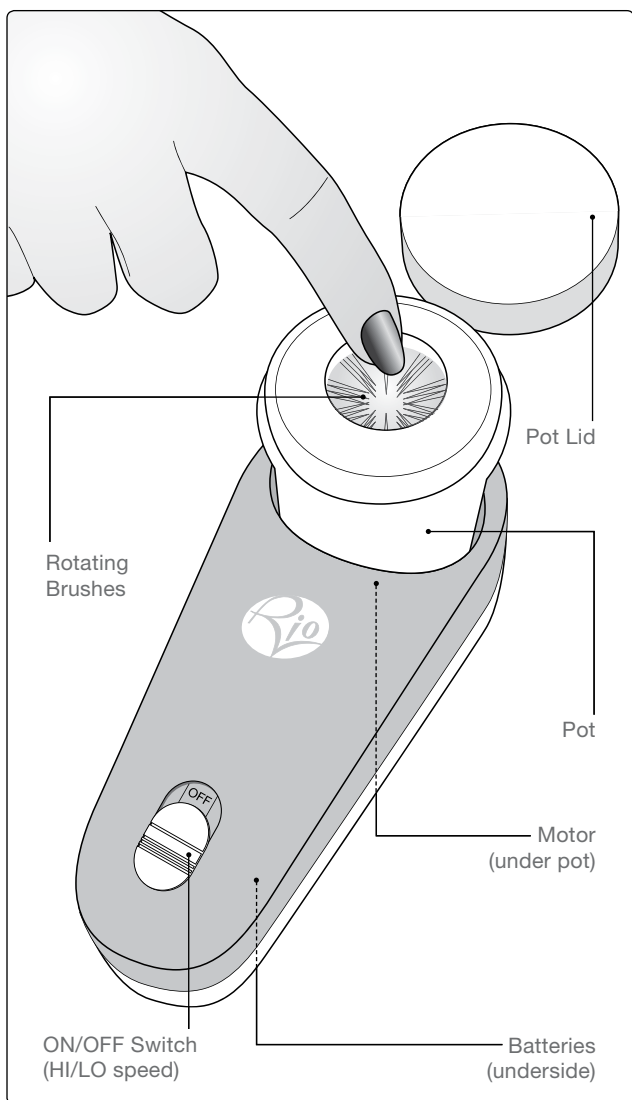
RAPID POLISH REMOVER



user guide



RAPID POLISH REMOVER



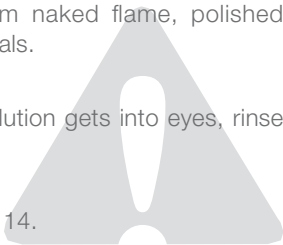
user guide

PRECAUTIONS

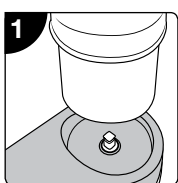
- Read all instructions thoroughly and retain for future reference.
- Do not use this product if you have any open cuts on or around the cuticles or fungal nail infections.

ACETONE SOLUTION:

- Highly flammable. Keep from naked flame, polished surfaces and synthetic materials.
- Not to be taken internally.
- Irritant to eyes. If acetone solution gets into eyes, rinse thoroughly with water.
- Keep out of reach of children.
- Not for use by children under 14.

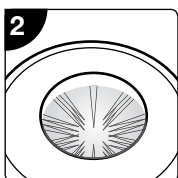


REMOVING POLISH



STEP 1

Align the square recess on the underside of the pot with the motor and push down to fix in place.



STEP 2

Unscrew the pot lid and pour enough acetone solution in to cover the rotating brushes.

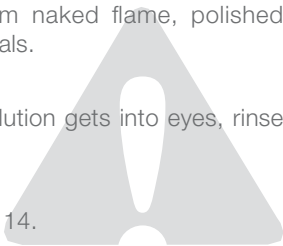
NOTE: Use a non-acetone based solution to remove polish from false nails as acetone will melt the nail tip.

PRECAUTIONS

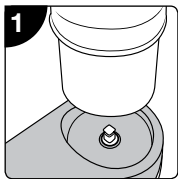
- Read all instructions thoroughly and retain for future reference.
- Do not use this product if you have any open cuts on or around the cuticles or fungal nail infections.

ACETONE SOLUTION:

- Highly flammable. Keep from naked flame, polished surfaces and synthetic materials.
- Not to be taken internally.
- Irritant to eyes. If acetone solution gets into eyes, rinse thoroughly with water.
- Keep out of reach of children.
- Not for use by children under 14.

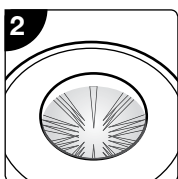


REMOVING POLISH



STEP 1

Align the square recess on the underside of the pot with the motor and push down to fix in place.

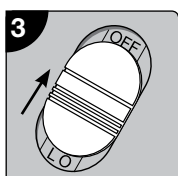


STEP 2

Unscrew the pot lid and pour enough acetone solution in to cover the rotating brushes.

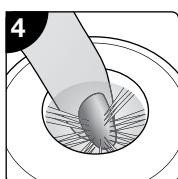
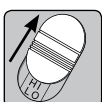
NOTE: Use a non-acetone based solution to remove polish from false nails as acetone will melt the nail tip.

REMOVING POLISH



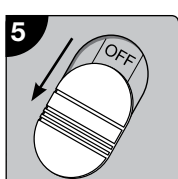
STEP 3

Push the switch up. On the first click, LO speed is selected. To select HI speed, push the switch fully up.



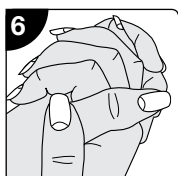
STEP 4

Insert a nail with nail polish into the pot, applying gentle pressure on the rotating brushes.



STEP 5

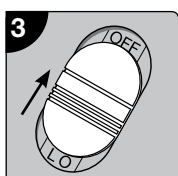
After use, push the switch fully down and screw the pot lid back on.



STEP 6

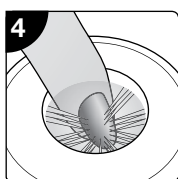
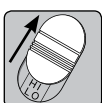
Wash hands and nails well with warm soapy water to remove all traces of remover solution. Massage a good moisturiser into your hands, nails and cuticle areas.

REMOVING POLISH



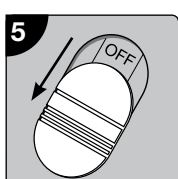
STEP 3

Push the switch up. On the first click, LO speed is selected. To select HI speed, push the switch fully up.



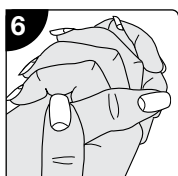
STEP 4

Insert a nail with nail polish into the pot, applying gentle pressure on the rotating brushes.



STEP 5

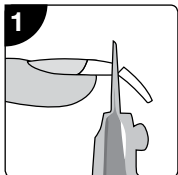
After use, push the switch fully down and screw the pot lid back on.



STEP 6

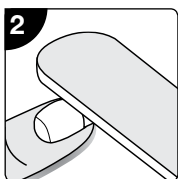
Wash hands and nails well with warm soapy water to remove all traces of remover solution. Massage a good moisturiser into your hands, nails and cuticle areas.

REMOVING NAIL EXTENSIONS



STEP 1

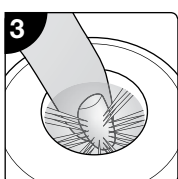
Cut false nails down.



STEP 2

Filing over the whole extension exposes the surface and speeds up removal.

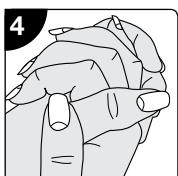
NOTE: If removing UV Gel nails you will need to completely file down the layers of gel before using the unit to remove the tip and glue.



STEP 3

Fully submerge the nail in acetone solution. Soak for 5–10 minutes before checking if the extension is softening.

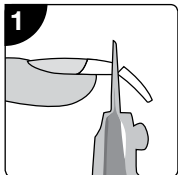
NOTE: Each time you lift your nails from the solution the nails start to harden again, so try to keep your nails submerged as much as possible.



STEP 4

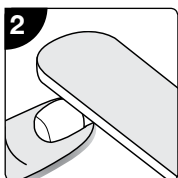
After removing nails, wash hands thoroughly to remove all traces of acetone. Massage a good moisturiser into your hands, nails and cuticle areas.

REMOVING NAIL EXTENSIONS



STEP 1

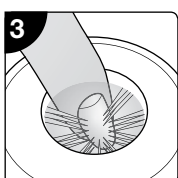
Cut false nails down.



STEP 2

Filing over the whole extension exposes the surface and speeds up removal.

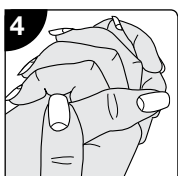
NOTE: If removing UV Gel nails you will need to completely file down the layers of gel before using the unit to remove the tip and glue.



STEP 3

Fully submerge the nail in acetone solution. Soak for 5–10 minutes before checking if the extension is softening.

NOTE: Each time you lift your nails from the solution the nails start to harden again, so try to keep your nails submerged as much as possible.



STEP 4

After removing nails, wash hands thoroughly to remove all traces of acetone. Massage a good moisturiser into your hands, nails and cuticle areas.